

INSTRUCTIONS FOR CUSTOMIZING THE HEADER GRAPHIC FOR THE COMPREHENSIVE REPORT OF FINDINGS

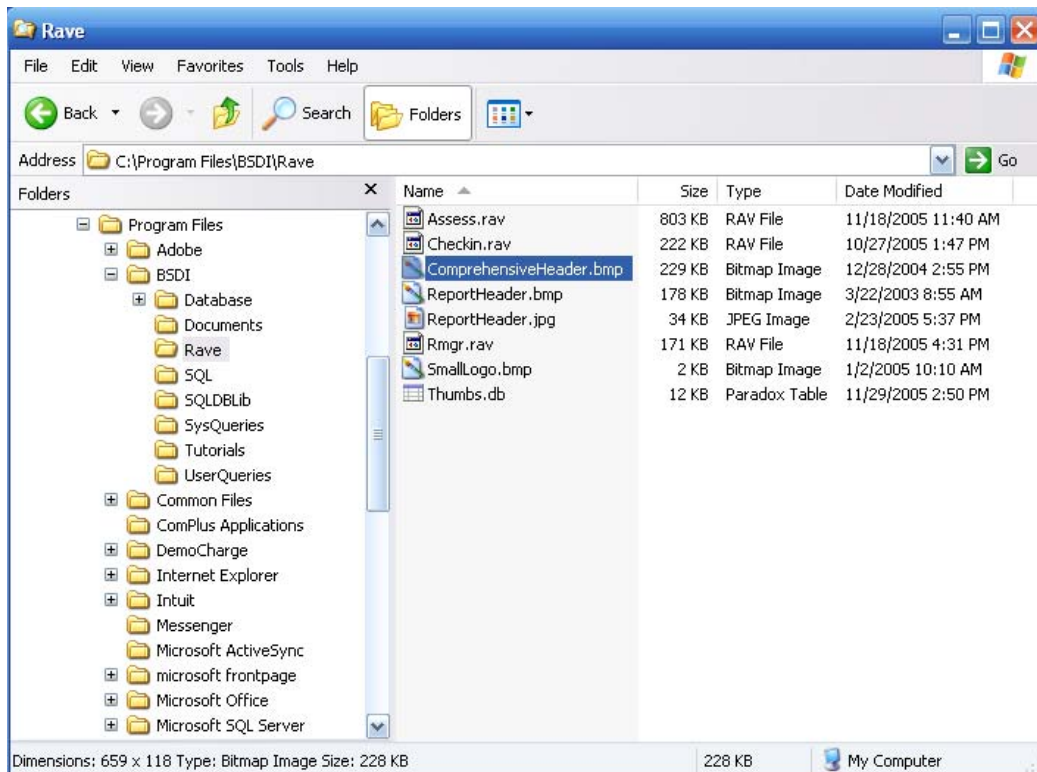
This document will outline the steps necessary to change the default header graphic for the Comprehensive Report of Findings, in the Fitness Analyst. The Comprehensive Report of Findings uses a different header graphic than other reports in the Fitness Analyst. Any changes made using these instructions will only affect this report.

Please note you will need to create a Header Graphic file that is 659 pixels by 118 pixels, and must be saved with the filename "ComprehensiveHeader.bmp", which is a "Bitmap (BMP)" file, prior to following these instructions. The instructions assume that you have already created this file.

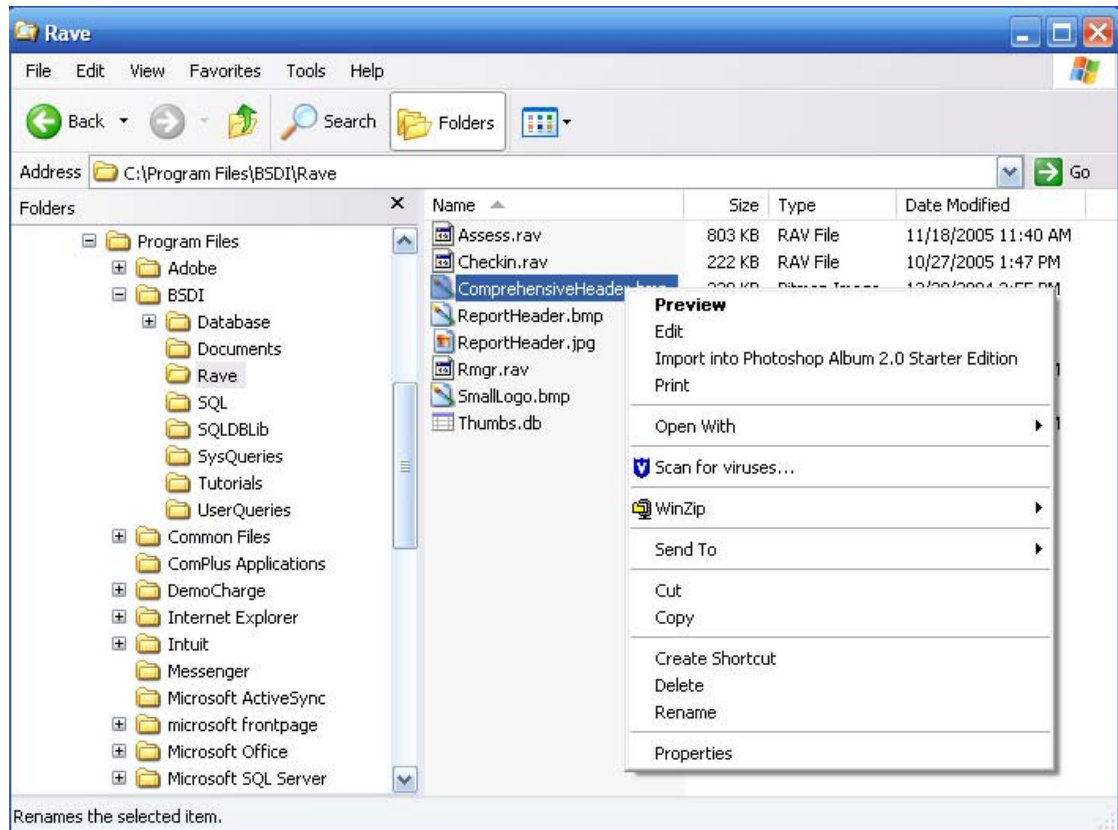
If you have more than one computer running the Fitness Analyst, this procedure needs to be carried out on each computer running the software.

Procedure

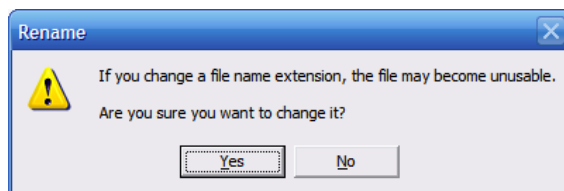
1. Right click on the "My Computer" icon on your desktop, or by clicking on the "Start" button.
2. Select "Explore" from the dropdown menu.
3. Navigate to "C:\Program Files\BSDI\Rave"



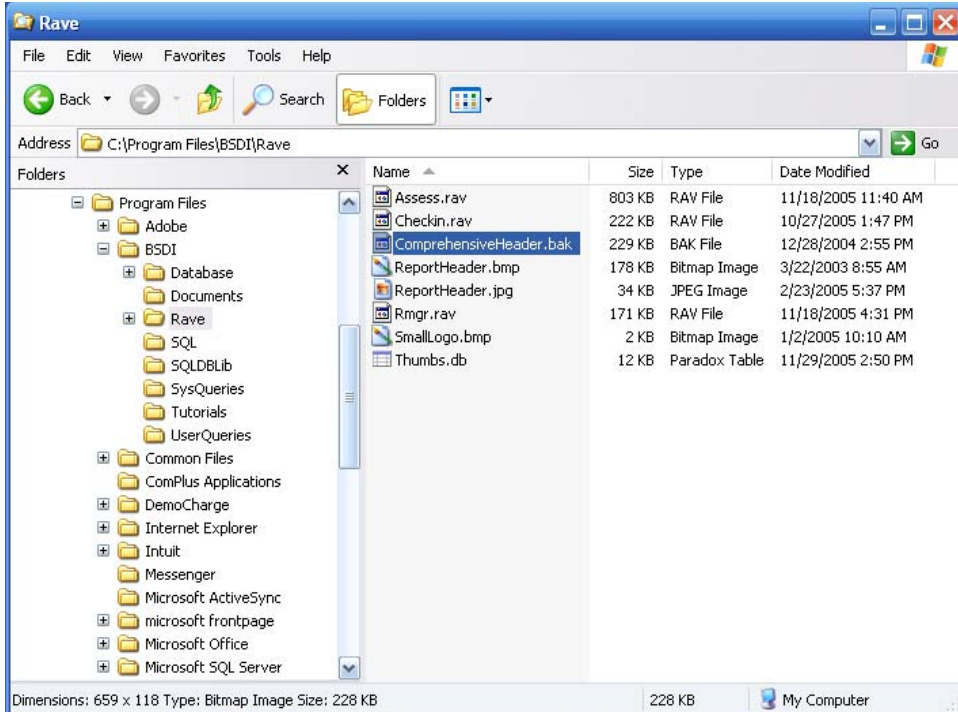
4. We are going to rename the original Header Graphic file, to another name as a backup. This ensures that if we do not like your replacement graphic, or that you wish to return to the original, it will be available.
5. Right Click on "C:\Program Files\BSDI\Rave\ ComprehensiveHeader.bmp".



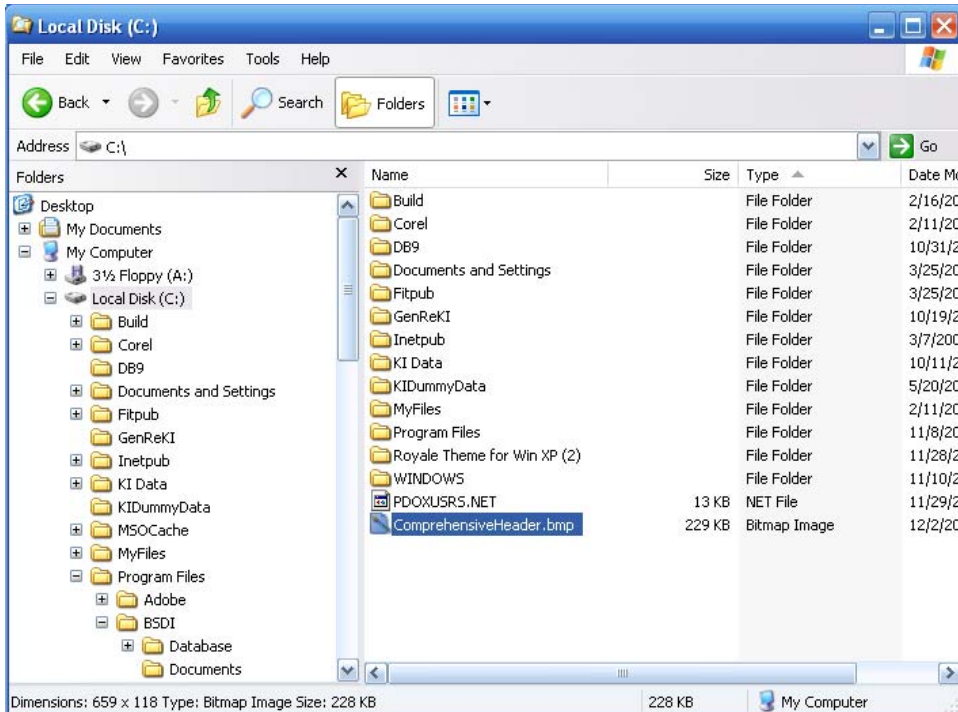
6. Select "Rename" from the dropdown menu.
7. Rename the file to "ComprehensiveHeader.bak"



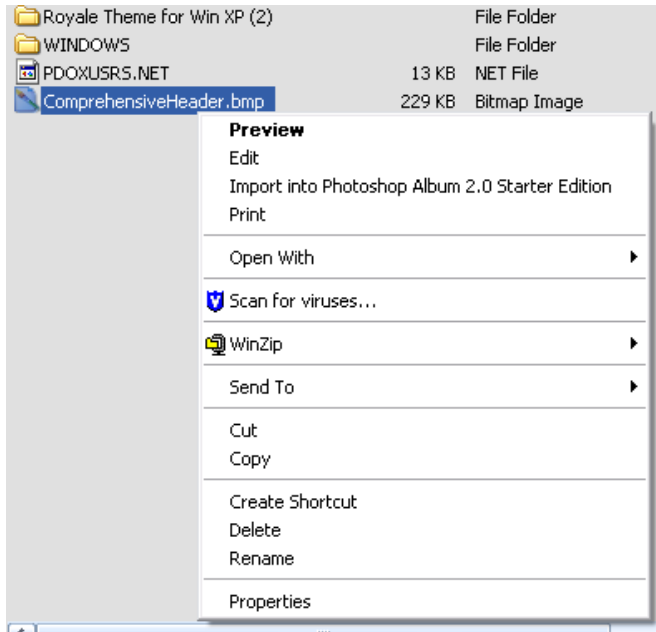
8. You will see a dialog box advising you about changing the file name extension.
9. Click "Yes"



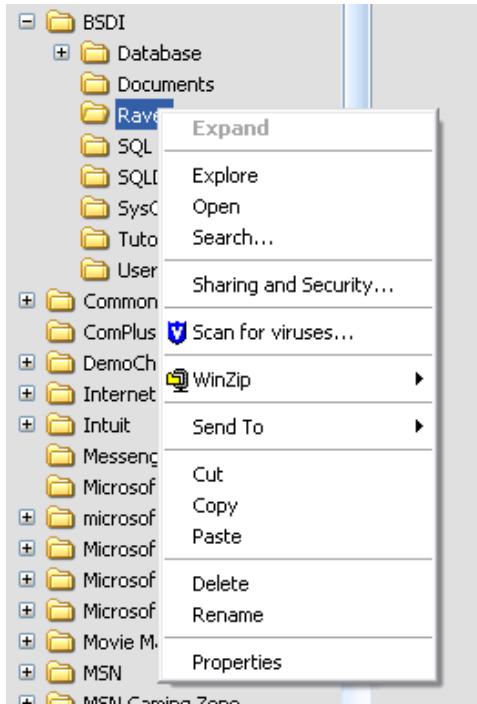
10. Navigate to the folder that contains your replacement header graphic.



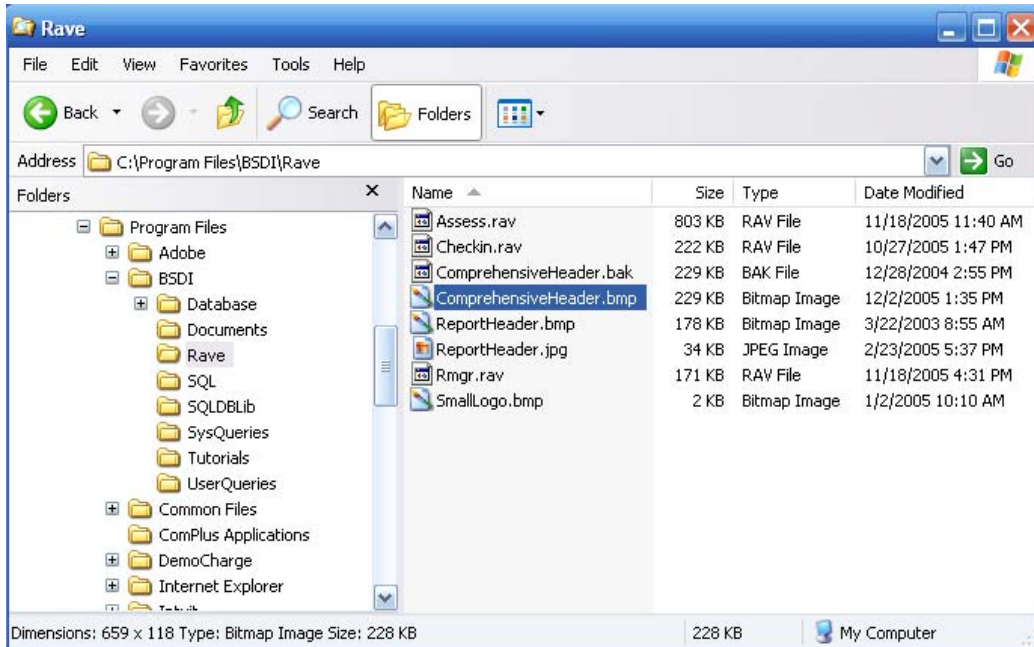
11. Right click on your replacement header graphic file "ComprehensiveHeader.bmp". (Remember it has to be named the same as the original file name.) & select "Copy".



12. Right click on the “C:\Program Files\BSDI\Rave” folder.



13. Select “Paste” from the dropdown menu, to copy the file into the “C:\Program Files\BSDI\Rave” folder.



14. Close the Windows Explorer.
15. Now when you run the Comprehensive Report of Findings you will see your customized Header Graphic displayed.

