

INSTRUCTIONS TO SPECIFY HEADER GRAPHIC FOR REPORTS

This document will outline the steps necessary to change the default header graphic for the Fitness Analyst reports.

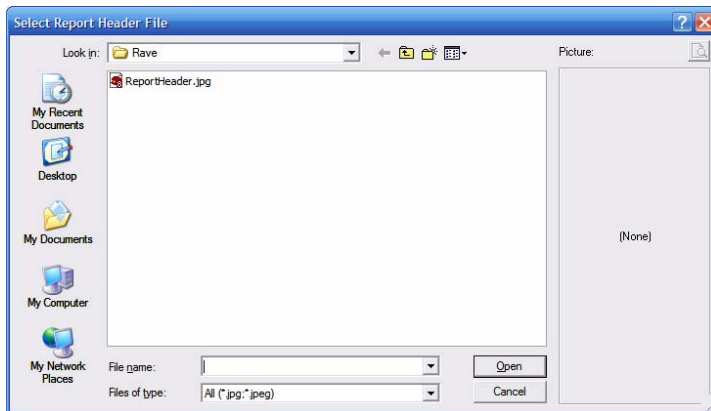
The software provides you with the ability to use your own custom header graphic for the Fitness Analyst Reports (with the exception of the Comprehensive Report of Finding Header, which uses a different sized graphic.) The default header graphic can be found in the "C:\Program Files\BSDI\Rave" folder, and is named "ReportHeader.jpg". If you wish to replace this graphic with you own graphic you will need to create a "jpeg" file of dimensions 659 pixels (width) by 92 pixels (height).

Procedure

1. From within the Fitness Analyst, click on "Configure" from the submenu.
2. Select "Select a Header Graphic for Reports" from the dropdown menu.



3. Click on "Select New" to select a new graphic.



4. In this dialog window you can navigate to the location of your replacement graphic.
5. Click on "Open" to select your graphic.
6. Then click "OK" on the "Select a Header Graphic for Reports" dialog window to save the new header.